

Easy Setup Nord Lead 4 Remote



Thank You for purchasing the Nord Lead 4 Remote Software.

!! ONLY WINDOWS USER

First go to Clavia's Website and download the latest USB MIDI Driver for Windows.

This driver is only necessary for Windows.

To use all functions of the editor you need to install this driver first. You have access to the editors functions via MIDI and USB.

<http://www.nordkeyboards.com/downloads/products/nord-lead-4>

If you want to refresh the parameters of the editor according to the patch you want to change you must do a program dump. Hold the „Shift“ Button and push the „Bank 2“ Button. You're now in the MIDI MENU. With the Dial Knob you choose SEND CC „6.CC“ and then push the Execute-Store-Button. The editor will refresh the parameters. (works only via USB or Midi in both directions) (PANORAMA and LFO1/ARP on/off do not refresh)



The first step after the installation of the driver is to connect the NORD LEAD 4 via USB-Cable or Midi IN and OUT. After that install the VST and the standalone application to your computer.

You should paste the VST file into your VST folder of your DAW.

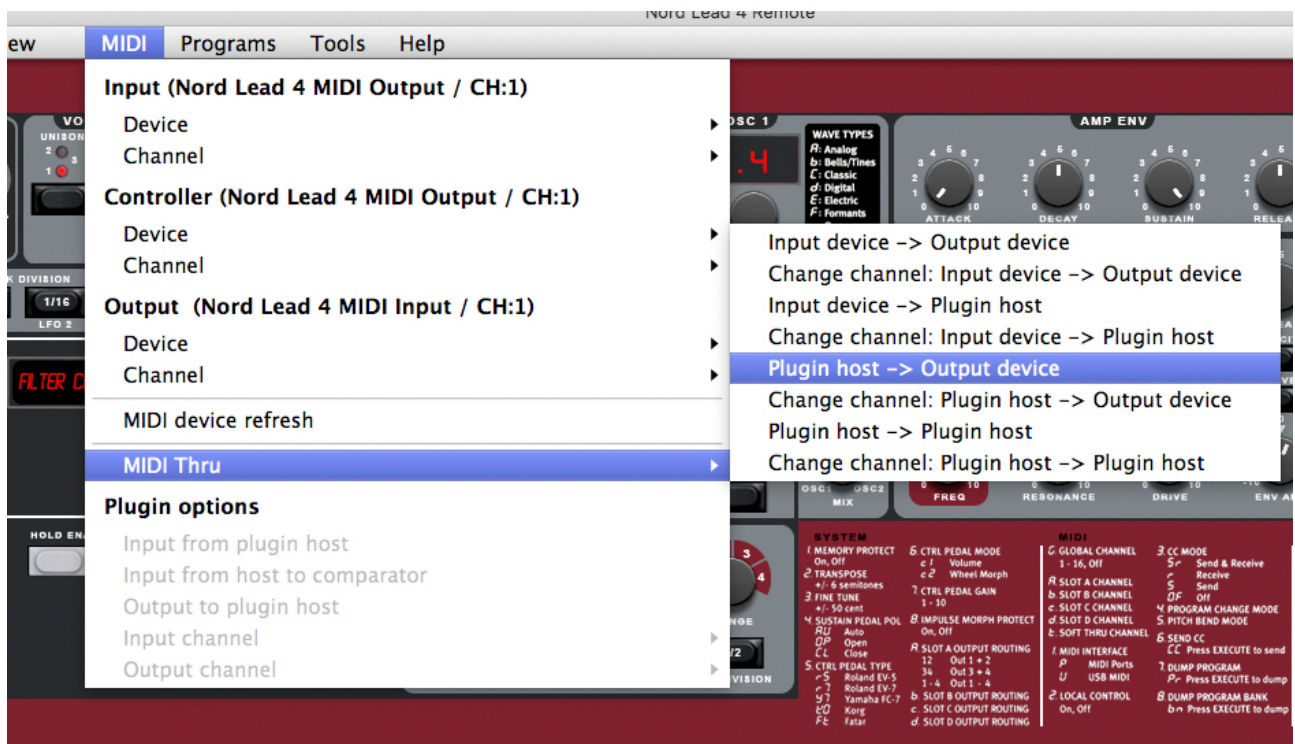
After launching your DAW start the application NORD LEAD 4 REMOTE as VST Instrument

creating a new Midi-Track.

Then create a Midi-Track for the Hardware Nord Lead 4. And always remember: Windows can not handle several midi-port the same time. So it could be necessary to switch some ports off.

Launch the application and make the following settings in the menu bar (MIDI) of the editor:

1. INPUT DEVICE > Nord Lead 4 MIDI Output or Midi Out
2. Channel 1 (this is the factory default Midi-Channel)
3. CONTROLLER > DEVICE > Nord Lead 4 MIDI Output or Midi Out
4. Channel 1
5. OUTPUT > DEVICE > Nord Lead 4 MIDI Input or Midi In
6. Channel 1
7. MIDI-THRU > Plugin Host – Output Device



That's all. You can now start playing the Nord Lead 4 and change the parameters with the Nord Lead 4 Remote in realtime.

Enjoy having more fun creating new patches.

For further information and support: <https://synthmania.de/kontakt/>